

HIPER Inference Cube

iSIM

The Challenge:

Today's intelligent edge applications need lightning-fast, reliable decisions at the edge. However, the complexity of scalable edge deployments based on modern Kubernetes, virtualization, and AI technologies, is a challenge resulting in reliability, serviceability, and deployment compromises.

Our Solution:

Introducing the HIPER iSIM, the adaptable powerhouse built for the most demanding edge cloud-native and AI workloads. It scales from 1 to 4 systems in the same cabinet including all power, networking and management interfaces.



KEY BENEFITS



SCALABILITY

Ability to scale inference capacity from 1 to 4 modules – guaranteeing performance that matches your evolving requirements.



AVAILABILITY

Our Kubernetes-orchestrated architecture ensures high availability, minimizing downtime in mission-critical edge deployments.



TAILORED TO YOU

Benefit from extensive customization – hardware accelerators, software stacks, modularity, and complete branding aligned to your unique needs.

Key Features

- Modular design with 1-4 compact inference units
- Choice of small inference accelerators, NPU acceleration, or CPU-based execution
- Single, unified API endpoint for simplified integration
- High-availability Kubernetes deployment
- White-label ready for seamless integration with your brand
- Thorough customization of hardware and software
- monitoring, optimized yield prediction

Ideal Use Cases

- Smart Manufacturing: Real-time quality control, predictive maintenance
- Intelligent Retail: Customer flow analysis, personalized recommendations
- Precision Agriculture: Ability to customize for harsh environments. Examples, Crop health monitoring, optimized yield prediction, etc.

Specifications

- Product: HIPER Global model HGIC-1042
- Dimensions: 14.9x15x9 in (380x381x231 mm)
- Power socket: Single IEC port 110v-240v
- Power consumption: 60W to 200W depending on configuration
- Airflow: Front to back
- Rack-mount kit: HGIC-RMKIT-1042
- Weight: Up to 27 lbs., ZXY Kg 12



Front



Back

HIPER GLOBAL MANUFACTURING FACILITIES



North Andover, MA

- U.S Headquarters
- Manufacturing
- Prototyping
- Warranty Support



United States

- Alpharetta, GA
- Littleton, MA
 - Prototyping
 - Manufacturing
 - Warranty Support



Israel (3 facilities)

- Prototyping
- Manufacturing
- Warranty Support



Europe Facilities

- Reading, UK
- Dusseldorf, Germany
 - Prototyping
 - Manufacturing
 - Warranty Support

HIPER GLOBAL SERVICES



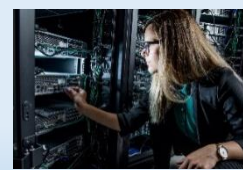
Design



Engineering



OEM Manufacturing



Rack Integration



Program Management



Global Logistics & Support

INDUSTRIES



Health Care



Unified Communications



Digital Surveillance & Security



Military



Cyber Security



Broadcast & Visual Communications

TESTING CAPABILITIES

HIPER Global is proudly **ISO 9001**, **ISO 13485**, and **AS9100** certified with tailored in-process and final inspections for each product.

In-House Capabilities

By conducting in-house testing, we can save our customers both time and money.

- Temperature
- Humidity
- Airflow (CFM)
- Structure-Borne Noise
- Drop-Tower Shock Testing
- Power Measurements
- Stress Testing
- Airborne Noise
- Vibration Testing

Though we still utilize some third-party testing, our partners are conveniently located near our facilities to quickly support other common testing that we perform: **EMI/EMC**, **vibration**, **altitude**, **safety**, and many others.

CONTACT US TODAY

Contact us to experience the future of scalable, highly available edge inference.